

Permanent & Portable

Our DISCatcher® is installed on more disc golf courses Worldwide than any other brand. Designed to lower your scores, the DISCatcher® Pro 28 is equipped with 28 chains. The DISCatcher®'s design has 14 outer chains, 7 intermediate, and 7 inner chains. This chain grid catches fast and slow putts, heavy and light discs like no other target.

Our chain racks are made from hot-rolled, electro-galvanized steel sheets and powder coated with industrial grade anti-corrosion coating. Our catching trays are hot dip galvanized and are over 9" deep to retain discs. Galvanized poles and stainless steel hardware means the DISCatcher® Pro 28 is in it for the long haul.

The DISCatcher® Pro 28 is available in both permanent and portable configurations. The portable configuration has a galvanized metal base with quick release stabilizing screws, allowing you to disassemble and transport the target with ease. The portable is perfect for use at home, as a demonstration target, or to add a hole to a course for tournament play.

The permanent model utilizes a hot dipped galvanized lockable installation sleeve to allow for relocation to different hole positions and to deter theft. A locking tab is included that will allow you to protect your investment in the finest disc golf target available.

DISCatcher® Pro 28

	Price	Savings
1 DC PRO 28	\$425	
9 DC PRO 28S	\$2925	\$900
18 DC PRO 28S	\$5850	\$1800

ADDITIONAL SLEEVES

\$25

*Freight charges not included



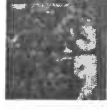
FLIGHT SCHOOL



DISC GOLF GUIDE

April 27, 2021

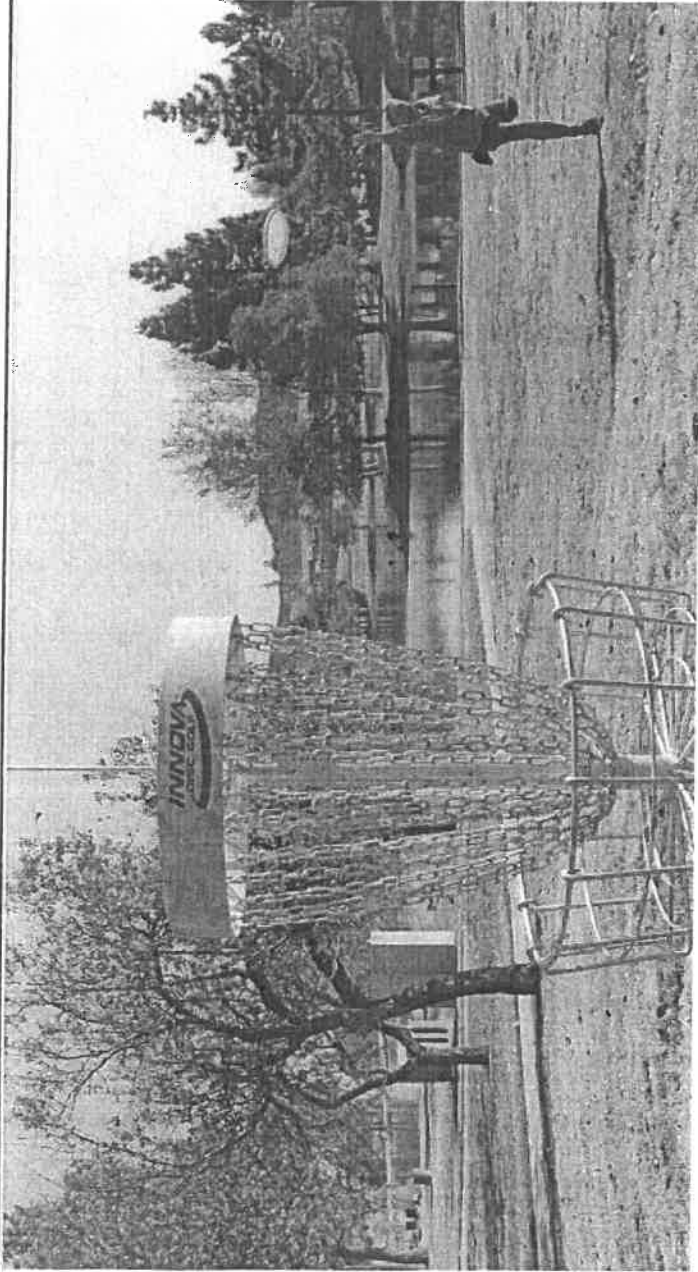
2021 USDGC and Throw Pink Women's Disc Golf Championship Qualifying Begins



The Road to the Championship kicks off in Las Vegas, NV! Qualifying for this year's... Now!

February 24, 2021

SPINTV



DISCatcher® Pro 28 Features

- 🏆 Approved for Championship level play by the PDGA
- 🔗 28 chains configured in three tiers for superior catching action
- 🎯 Catches fast and slow putts and has a large sweet spot
- 🔧 14 spoke catching tray design with additional ring support adds strength while reducing the possibility of discs squeezing through
- 🌧️ All-season weather tested long lasting outdoor materials – Galvanized steel, galvanized chains, hot-rolled, electro-galvanized and powder coated chain rack, and stainless steel hardware
- 🔒 Includes installation sleeve and locking collar
- 👁️ 4" tall chain rack available in a variety of colors, improves visibility in all conditions, and knocks down high putts
- 📏 Deep basket with in line nubs (wire bends) to minimize adverse action for low putts
- 🔢 Included 3" vinyl hole numbers are easy to read at distance
- 🔄 Available as a permanent or portable version
- 🎨 Available in custom colors



 72709 followers

 118856 likes

 42203 followers

DISCatcher® Pro 28 Permanent Model Specifications

April 27, 2021

CHAIN RACK

Hot-rolled, electro-galvanized steel sheets. Powder-coated finish. 22" diameter x 4" outer band. 5/16" steel rod frame. 4" x 1 15/16" I.D. tubing 0.156 wall, drilled and tapped collar. All joints welded. Decals affixed.

Chain

Hot-dip galvanized finish. 2/0 straight link coil chain. 28 strands. (14 outer, 7 intermediate, 7 inner)

Catching Tray

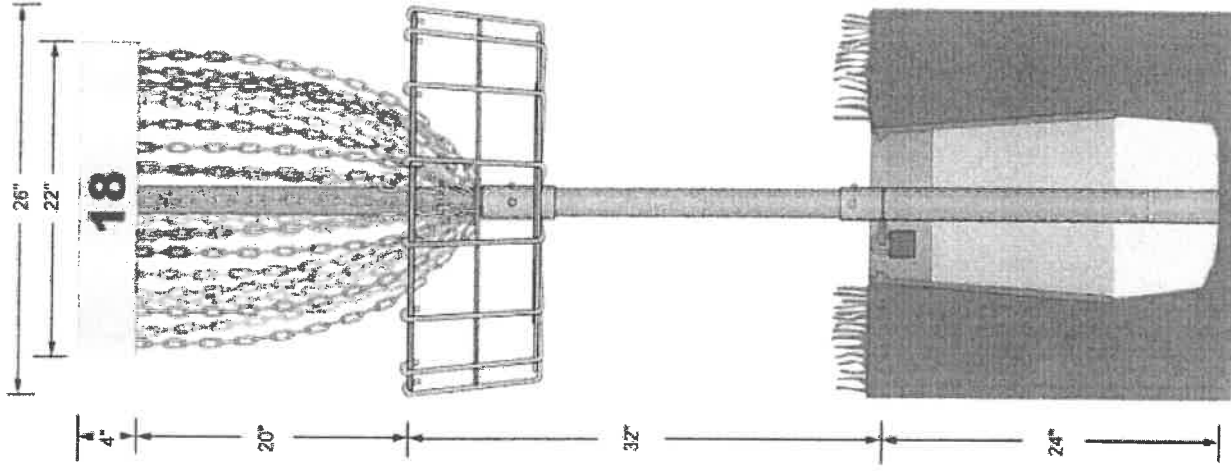
Hot-dip galvanized 3/8" steel rod, 5"x15/16" I.D. tubing 0.156 wall, drilled and tapped collar. All joints welded.

Pole

Hot-dip galvanized finish. 74" x17/8" O.D. galvanized steel pipe, 0.120 wall, drilled.

Collar

Hot-dip galvanized finish. 3"x15/16" I.D. tubing 0.095 wall, drilled and tapped.



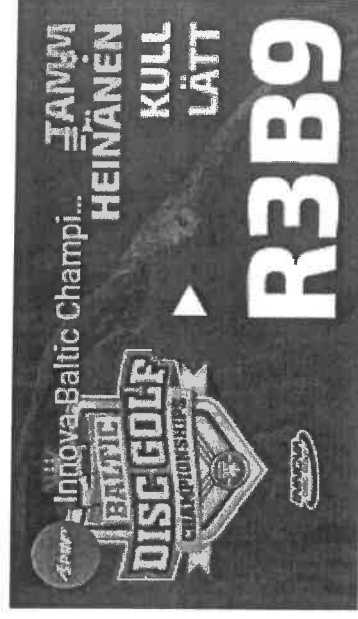
2021 USDGC and Throw Pink Women's Disc Golf Championship Qualifying Begins



The Road to the Championship kicks off in Las Vegas, NV! Qualifying for this year's... [More](#)

February 24, 2021

SPINTV



17709 followers



118656 likes



42203 followers

Parts (included per target)

- One Pole
- One Target Top (w/chains)
- One Basket
- One Locking Collar

Hardware (included per target)

- Three 5/16" x 2 3/4" hex head bolts
- Two 1/4" x 3/4" one-way screws
- One 1/4" x 3/8" hex head bolt
- Three 5/16" lock nuts
- One 1/4" lock nut
- One 1/4" washer

Assembly Tools and Extras (not included)

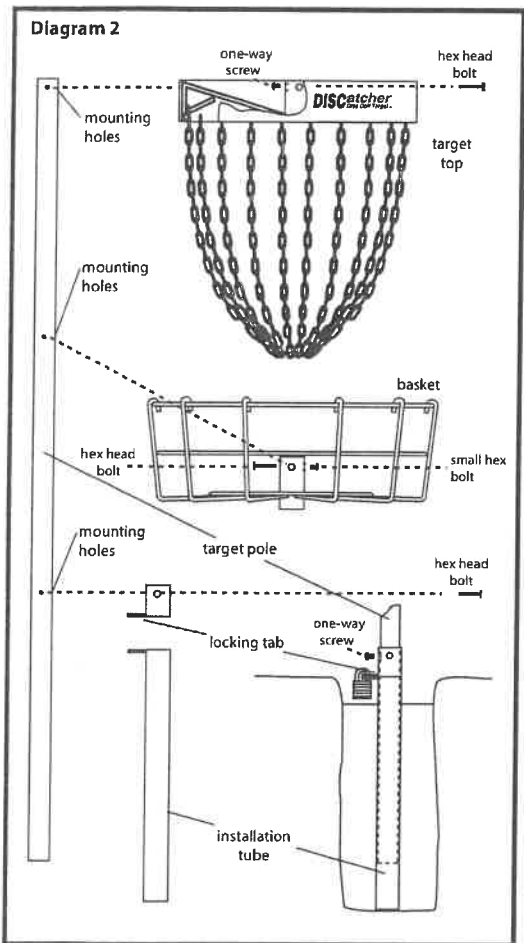
- One padlock per target
- Two 1/2" and one 7/16" wrenches or sockets
- Flat head screwdriver (short)



WAIT AT LEAST 24 HOURS AFTER POURING CONCRETE TO INSTALL ASSEMBLED TARGETS.

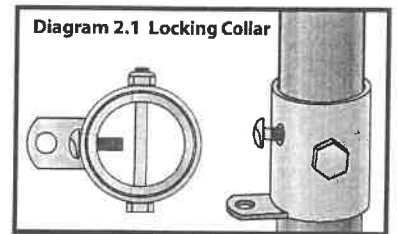
You must be patient enough to let the concrete set thoroughly before putting the target in. This usually takes at least one day.

ASSEMBLING THE DISCATCHER® TARGET (Diagram 2)

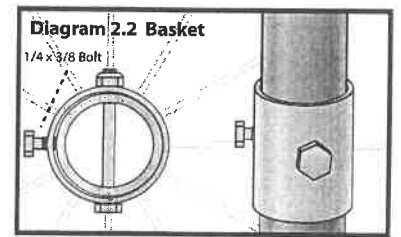


The easiest way to assemble the DISCatcher® Target is with the pole on the ground (the top of the main pole has mounting holes drilled within an inch of the end).

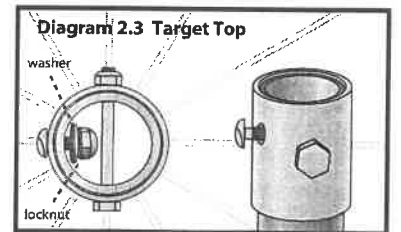
Step 1 LOCKING COLLAR - From the bottom end of the pole the locking collar should slide onto and line up with the bottom 3 mounting holes, with the tab portion at the bottom of the collar. Insert and tighten the 1/4" x 3/4" one-way screw into the threaded hole above the tab. Insert the 5/16" x 2 3/4" hex bolt through the collar and pole and tighten locknut.



Step 2 BASKET - From the top of the pole slide the basket down and line up the 2 holes for the hex bolt, with the threaded hole on the same side of the pole as the locking collar tab. Insert 5/16" x 2 3/4" hex bolt and tighten locknut. Apply a small amount of threadlock to the 1/4" x 3/8" hex bolt and insert into the threaded hole on the basket and tighten against the pole.



Step 3 TARGET TOP - Hold up target top to make sure chains hang freely and are not tangled. While holding up target top tilt slightly and slide the two rings at bottom of chains onto top of pole. Be careful not to let any chains cross between the top of the pole and the hole in the center of the target top, as you put the target top onto the pole. Line up the three holes on the target top with the top 3 holes on the pole. Insert and tighten 1/4" x 3/4" one-way screw into threaded hole on front of target top lining up with tab of locking collar. Start the 1/4" washer and locknut onto back of one-way screw. (Do not tighten) Insert 5/16" x 2 3/4" hex bolt through target top and pole tighten locknut. At this point tighten the 1/4" locknut onto one-way screw.



Still have questions? Give us a call.

West Coast Sales
(800) 408-8449
900 S. Dupont Ave. | Ontario, CA 91761

East Coast Sales
(800) 476-3968
2850 Commerce Drive | Rock Hill, SC 29730

PERMANENT TARGET GROUND TUBE INSTALLATION

Parts (included per target location)

- Installation Tube

Installation tools and extras needed

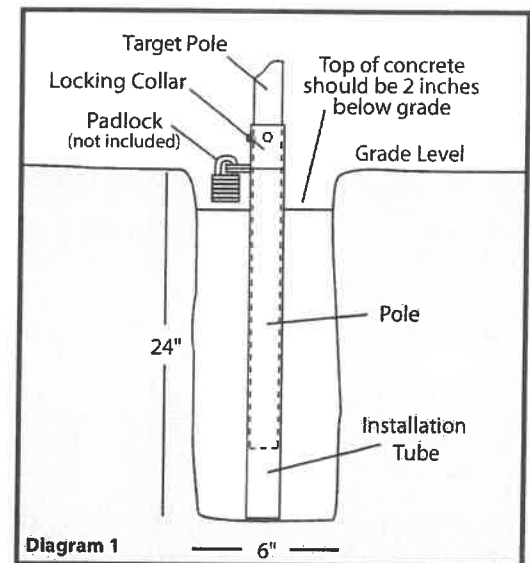
- One Target Pole & Locking Collar assembled from Step 1 on page 2.
- Duct or packing tape
- 60 pounds of concrete per target
- Post hole digger or auger
- Torpedo level or carpenter's level



WARNING: Before digging always contact your local utilities and property maintenance to locate any underground lines. (Water, Gas, Electrical, Sprinkler, etc...)

SETTING THE INSTALLATION TUBE (Diagram 1)

- Step 1** Dig a hole that is at least 6 inches in diameter and 24 inches deep. Most manual post hole diggers create a 6 inch diameter hole, but if you are installing an entire course it is maybe worth the money to rent a two man auger with a 6 inch bit.
- Step 2** Assemble one pole and locking collar according to Step 1 of Target Assembly (see other page). Tape the bottom of the installation tube with duct tape or packing tape to prevent any concrete getting into the tube during installation. Place the installation tube in the hole with the tab pointing towards the tee or line of play, (this will assure that the number on the target faces the tee). The tab should be at, or slightly below grade level to keep it away from lawn mower blades and to establish the correct height for the target. Slide the target pole with locking collar attached into the installation tube. This will keep cement out of the installation tube while pouring. Just one pole with locking collar can be used to set up the installation tubes for your entire course.
- Step 1** Pour the concrete into the hole around the installation tube to no higher than two inches below grade level. This will allow room for a padlock (not included). Use a level to plumb the pole on at least two sides 90° from each other. A torpedo level works best. After leveling the pole, make sure the tab still points toward the tee or line of play, clean off any concrete on the locking tab and then carefully remove the pole from the tube.



Still have questions? Give us a call.

West Coast Sales
(800) 408-8449
900 S. Dupont Ave. | Ontario, CA 91761

East Coast Sales
(800) 476-3968
2850 Commerce Drive | Rock Hill, SC 29730



Palos Sports | School Health Corporation
 11711 S. Austin Avenue • Alsip, IL 60803
 P(800)-233-5484 | F(877)-800-5973
 PalosSports.com

QUOTE

Attn: THOMAS JOHNS
 Ship To:
 CITY OF PLANO
 17 E MAIN ST
 PLANO, IL 60545-1521

Bill To:
 CITY OF PLANO
 17 E MAIN ST
 PLANO, IL 60545-1521

EXPIRATION DATE		QUOTE NO.
08/09/21		5525424-00
DATE	P.O. #	PAGE #
05/11/21	PE SUPPLIES 5/11/21	1

QUOTE PREPARED BY	PHONE	EMAIL
Kathy Tutak-Warning		ktutak@palosports.com

INSTRUCTIONS	SHIP POINT	VIA	SHIPPED	TERMS
	ALSIP WAREHOUSE	UPS GROUND		NET 30

LN	PRODUCT AND DESCRIPTION	QUANTITY ORDERED	QTY. UM	UNIT PRICE	PRICE UM	DISCOUNT MULTIPLIER	AMOUNT (NET)
----	-------------------------	------------------	---------	------------	----------	---------------------	--------------

1	66582-PS X66582-DISCATCHER 9 PERMANENT TARGETSET@*DSK ** Shipping Direct From Manufacturer ** Please ship for each set ordered: 9 Each DCP-01-PERM	1	SET	3449.97	SET	0.00	3449.97
---	--	---	-----	---------	-----	------	---------

Items stocked in our warehouse usually ship within 24 hours. Items above may be indicated as ****Shipping Direct From Manufacturer**** or ****Oversized (O/S) Item****. Costs for ****Oversized (O/S) Item**** are shown with your order totals. Delivery times for items ****Shipping Direct From Manufacturer**** vary. For specific delivery time, call customer care at 866-323-5465.

1 Lines Total

Sub Total	3449.97
Freight	552.00
Taxes	344.99
Invoice Total	4346.96

Tax ID Number: 36-2425385
 Cage Code: 1E060
 Duns Number: 02-490-6331

To receive an email with tracking information when your order has shipped, please provide your email address when placing your order. Help us also reduce paper usage and become more eco-friendly by providing your email address to send your invoices and order confirmations electronically. Thank you, for the opportunity to work with you and if you have any questions, please contact our Customer Care Department @ 866 323 - 5465.